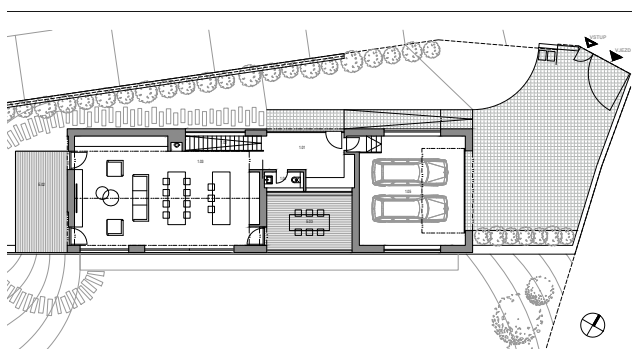
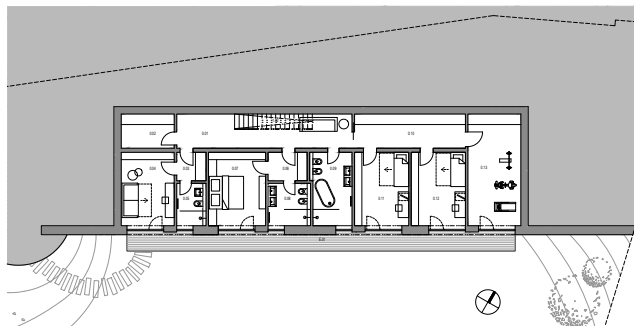


Spec homes - ZAHOŘANY NEAR BEROUN

# SKY LINE PANORAMIC 235/29

Two-storey house with **6 rooms** usable area of **324 m<sup>2</sup>** on a plot of **1.124 m<sup>2</sup>**.



FIRST FLOOR		
#	Room	m <sup>2</sup>
0.01	STAIR HALL	21.6
0.02	TECHNICAL BACKGROUND	6.8
0.03	CLOAKROOM	3.4
0.04	WORKING HOUSE / BEDROOM HOST	15.1
0.05	BATHROOM	4.4
0.06	CLOAKROOM	4.4
0.07	PARENT BEDROOM	16.2
0.08	BATHROOM	6.5
0.09	BATHROOM	10.8
0.10	CLOAKROOM	14.9
0.11	BEDROOM	15.5
0.12	BEDROOM	15.5
0.13	FITNESS	22.8
<b>TOTAL</b>		<b>178.8</b>
E.01	TERRACE	27.9

SECOND FLOOR		
#	Room	m <sup>2</sup>
0.01	ENTRANCE HALL	16.2
0.02	STAIRCASE	4.4
0.03	LIVING ROOM WITH KITCHEN	76.7
0.04	WC	2.2
0.05	GARAGE	46.4
<b>TOTAL</b>		<b>144.8</b>
E.02	TERRACE	20.9
E.03	TERRACE	18.6

